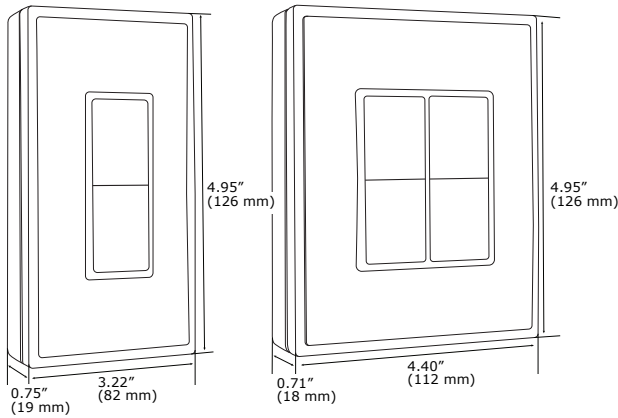


Rocker Pad (Single, Double)



Package Contents

- Rocker pad
- Wall plate
- Screws and wall anchors

Tools Required

- Power drill, 3/16" bit
- Screwdriver
- Leveling tool

Product Description

Verve self-powered Rocker Pads provide a flexible and convenient interface for switching, dimming, and various other system controls. The energy generated by simply clicking the rocker pad is harvested and used for wireless communication with other Verve devices that efficiently control lighting, HVAC and more.

Single and Double Rocker pads can be surface mounted or installed flush over an existing wall box.

Features Include:

- User interface for switching and dimming, and more
- Harvests kinetic energy from the rocker action—no batteries
- Installs easily on new or existing walls—no wiring

Specifications

Power Supply	Electrodynamic harvesting
Transmission Range	80ft. (25'm)
Radio Frequency	315 MHz
Dimensions	Single: 4.95" H x 3.22" W x .75" D (126mm x 82mm x 19mm) Double: 4.95" H x 4.40" W x .71" D (126mm H x 112mm W x 18mm D)
Weight	Single: 3.98oz. (112.9.3g) Double: 5.3oz. (150.3g)
Environment	<ul style="list-style-type: none"> • Indoor use only • 32° to 131°F (0° to 55°C) • 5% to 95% relative humidity (non-condensing)
Agency Compliance	FCC and I.C.

1 Planning

Take a moment to prepare and ensure optimal communication with other system components, and for user convenience.

- Pick a convenient location, perhaps near a door where occupants enter and exit
- Consider the construction materials in the space and obstacles that may interfere with RF signals

For detailed information, see the *Verve System Planning Guide* at www.vervelivingsystems.com.

2 Installing

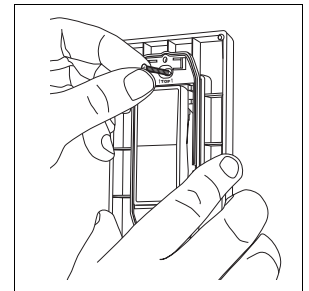
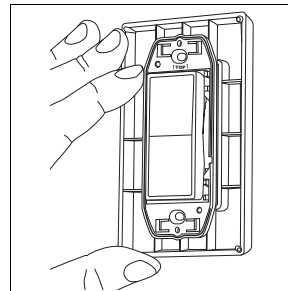
estimated time: 10 minutes



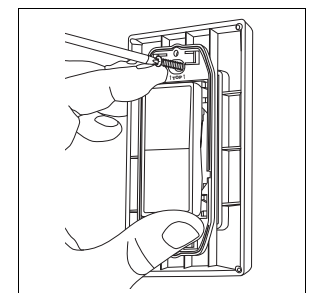
1. Decide where you want to mount the rocker pad. The standard height for wall switches is 49" or 125cm on center.
2. Remove the wall plate from the rocker pad assembly.
3. Decide which of the two installation options is appropriate.

Option 1: Surface Mounted Installation

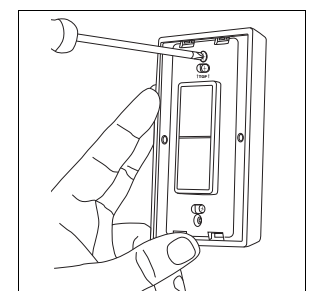
- a. Using a level and a pencil, lightly mark 2 small dots to align the top edge of the mounting plate.
- b. Mark the mounting screw drill points.



- c. Drill holes for the wall anchors with a 3/16" drill bit and insert the wall anchors.
- d. Insert the top screw(s) loosely and level the back plate.
- e. Insert the bottom screw(s), and then hand tighten the top screw(s).
- f. Attach the wall plate on top of the rocker pad using the two screw holes.



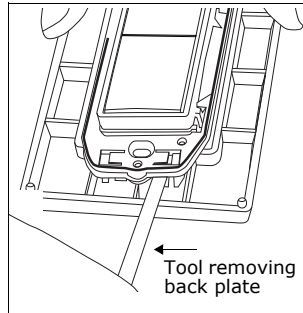
Note: For proper assembly, make sure to align the "top" labels on the rocker pad and wall plate.



Option 2: Flush Mounted Installation

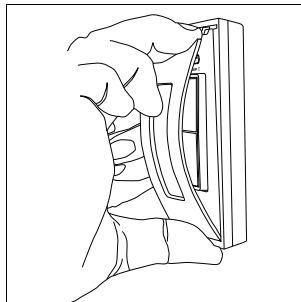
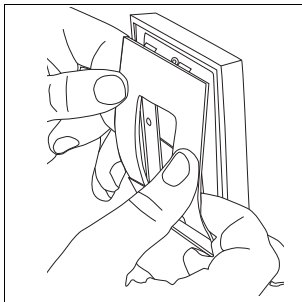
Note: When installing over an existing wall box make sure any bare electrical wires are capped.

- a. Remove the assembly screws which hold the wall plate, rocker pad, and mounting plate together.
- b. Use a tool to carefully pry the rocker pad free from the back plate. The back plate is not used for this option.
- c. Mount the rocker pad over the existing wall box using the two screw holes,



Note: For proper assembly, make sure to align the “top” labels on the rocker pad and wall plate.

- d. Attach the wall plate on top of the rocker pad using the two wall box screw holes.
5. Insert the trim plate tabs in the bottom slots, and then lightly flex the plate to insert top tabs.



Tip: To remove the trim plate, use a flat-head screwdriver to depress the trim plate tabs using the 2 slots on the bottom of the wall plate. Alternatively, use a fingernail to press down along the top groove and flex the tabs out of the slots.

6. Click the rocker pad on and off to test the mechanism.
- Note:** To activate dimming, press and hold; top button to increase, bottom button to decrease.

3 Linking

Verve wireless systems are highly flexible; two or more compatible devices can be linked and configured to provide the desired control.

There are two basic types of devices in the Verve system; transmitters and transceivers.

- **Transmitters** are simple energy-harvesting devices that send RF messages to communicate a condition, level, or state. Transmitters can only be linked to transceivers.
- **Transceivers** are wire-powered controlling devices that send as well as receive RF messages. They also process relevant control logic, and actuate the appropriate outputs (switching a light on or off for example). Transceivers can be linked to transmitters as well as other transceivers. A Verve transceiver can have up to 30 devices linked to it.

All Rocker Pads are Transmitters

To link devices, the transceiver must first be powered, within the transmission range, and set to accepts links using the setup interface on the transceiver.

Next, the desired transmitter, or another transceiver, is triggered to send a special link message. The awaiting transceiver receives and stores the link permanently so the devices can interact to provide a variety of intelligent control options.

For detailed information on Verve system capabilities and options, see the *Verve System Planning Guide* at www.vervelivingsystems.com.

To link a Rocker Pad to a transmitter:

1. Access the Accept Link option on the transceiver.
 2. Click the rocker pad’s top button three times quickly.
- The rocker pad is now linked.

Troubleshooting

Problem	Solution Checklist
The rocker pad does not generate a message	<ul style="list-style-type: none"> • Verify the rocker pad is installed in the proper orientation
The linked device does not respond to wireless messages	<ul style="list-style-type: none"> • Check for environment or range issues • Verify the device is linked • Check the transceiver connection and the wiring for errors • Check if appropriate devices are linked according to good system planning

FC FCC SSZV-PTM200C / SZV-PTM210C
 I.C. 5713A-PTM200C / 5713A-PTM210C
 This device complies with Part 15 of the FCC Rules. Operation is subject to the following two conditions: (1) this device may not cause harmful interference, and (2) this device must accept any interference received, including interference that may cause undesired operation.

Limited Warranty

Verve™ Products Limited Warranty. Subject to the other terms of this warranty, Liberty Hardware Mfg. Corp. (“Liberty Hardware”) warrants you the original purchaser that this Verve™ product will be free from defects in material and workmanship for five years from the date of your purchase of the product. During that period, if the product does not comply with this limited warranty, Liberty Hardware will, at its discretion, repair or replace the product. Repair or replacement is your sole remedy under this or any other warranty of the product, whether express or implied. Coverage Limitations. This limited warranty extends only to the original purchaser and is not transferable. This limited warranty expressly excludes any defects or damages resulting from any product installed improperly or in an improper environment, overloaded, misused, opened, abused, or altered in any manner. Instructions for Warranty Service. To obtain warranty service return the Verve™ product, a description of the problem, together with your proof of purchase, securely packaged and with postage prepaid, to: Liberty Hardware Mfg. Corp. Attn: Customer Service - Verve Living Systems 140 Business Park Drive Winston Salem NC 27107 You may be required to provide other information or evidence of the defect. Any returned product that is replaced becomes the property of Liberty Hardware. Implied Warranties. TO THE EXTENT PERMITTED BY LAW, ANY IMPLIED WARRANTIES, INCLUDING ANY WARRANTY OF MERCHANTABILITY OR FITNESS FOR A PARTICULAR PURPOSE, ARE LIMITED TO THE SAME DURATION AS THIS EXPRESS WARRANTY. Some states do not allow limitations on how long an implied warranty lasts, so the above limitation may not apply to you. NO OTHER EXPRESS WARRANTY HAS BEEN MADE OR WILL BE MADE BY LIBERTY HARDWARE MFG. CORP. WITH RESPECT TO THIS PRODUCT. Limitation of Liability. LIBERTY HARDWARE SHALL NOT BE RESPONSIBLE FOR SPECIAL, INCIDENTAL OR CONSEQUENTIAL DAMAGES SUCH AS THE COST OF LABOR FOR REMOVAL OR REINSTALLATION OF THE PRODUCT, WHETHER ARISING OUT OF BREACH OF WARRANTY, BREACH OF CONTRACT, TORT, OR OTHERWISE. Some states do not allow the exclusion of incidental or consequential damages, so the above exclusion and limitation may not apply to you. If you have any questions about this warranty, contact us at 1-877-874-8774. This limited warranty gives you specific legal rights, and you also may have other rights which vary from state to state. In Canada, the above provisions are not intended to operate where prohibited by law and do not preclude the operation of any applicable provisional consumer protection statute which in certain circumstances may extend the express warranties herein.

